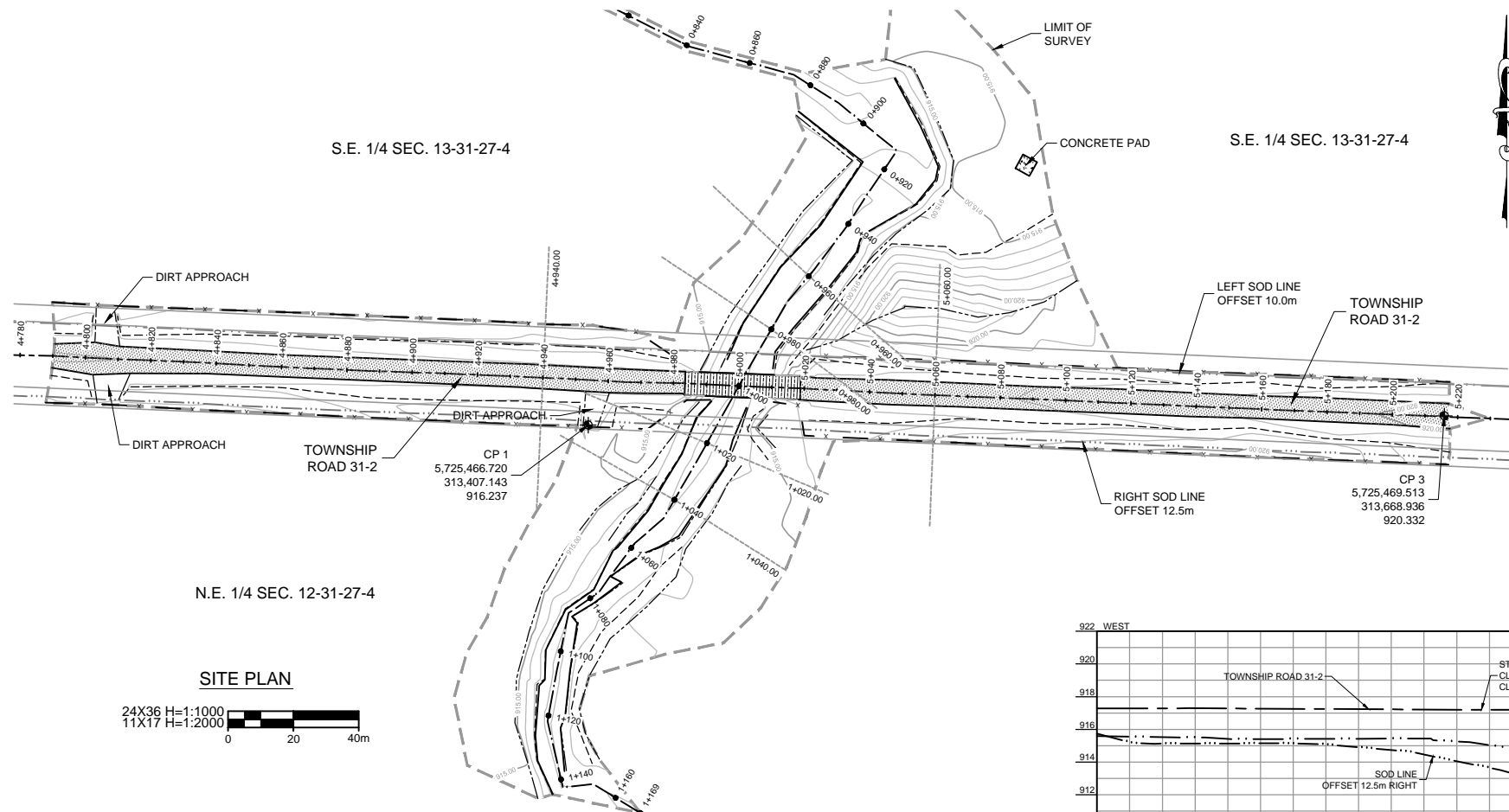


DATE	
BY	
MOSAIC	
SURVEYED	
PLOTTED	
PHOTO. INTERP.	
CHECKED	

DATE	
BY	
DETAIL	
No.	
REVISIONS	

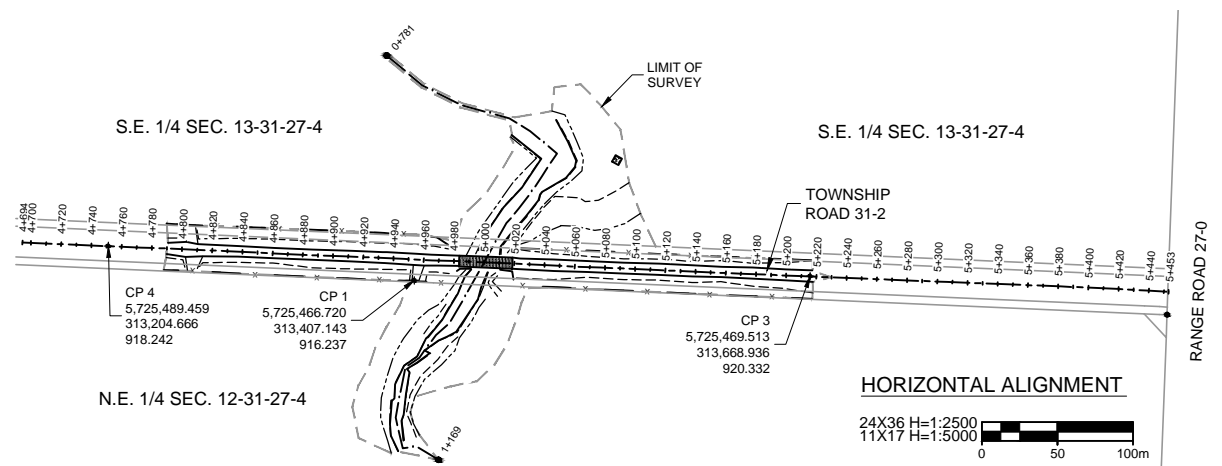
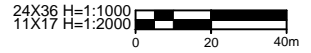
DATE	
BY	
DETAIL	
No.	
REVISIONS	

DATE	
BY	
SURVEYED	
SEGS. PLOTTED	
DESIGN PLOTTED	
PROFILE	
FIELD BOOK NO.	

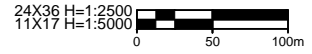


N.E. 1/4 SEC. 12-31-27-4

SITE PLAN



HORIZONTAL ALIGNMENT

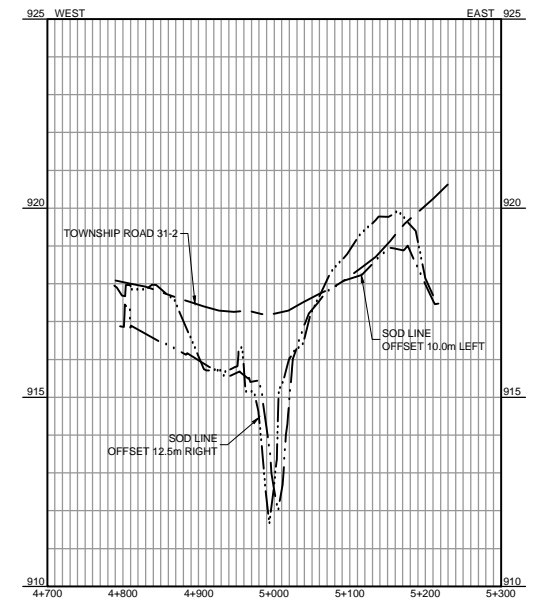


LEGEND

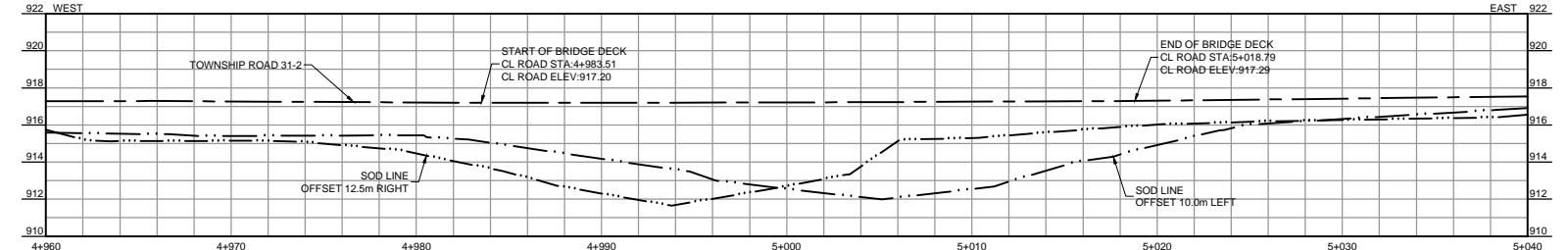
MAJOR CONTOUR (5.0m)	—————
MINOR CONTOUR (1.0m)	—————
PROPERTY LINE	—————
RIVER BED	—————
CENTERLINE ROAD	—————
SHOULDER LINE	—————
TOE LINE	—————
WATER LEVEL LINE (JULY 24th, 2014)	—————
FENCE LINE	x — x — x —
ASPHALT ROAD	—————
WOODEN BRIDGE DECK	—————

NOTES

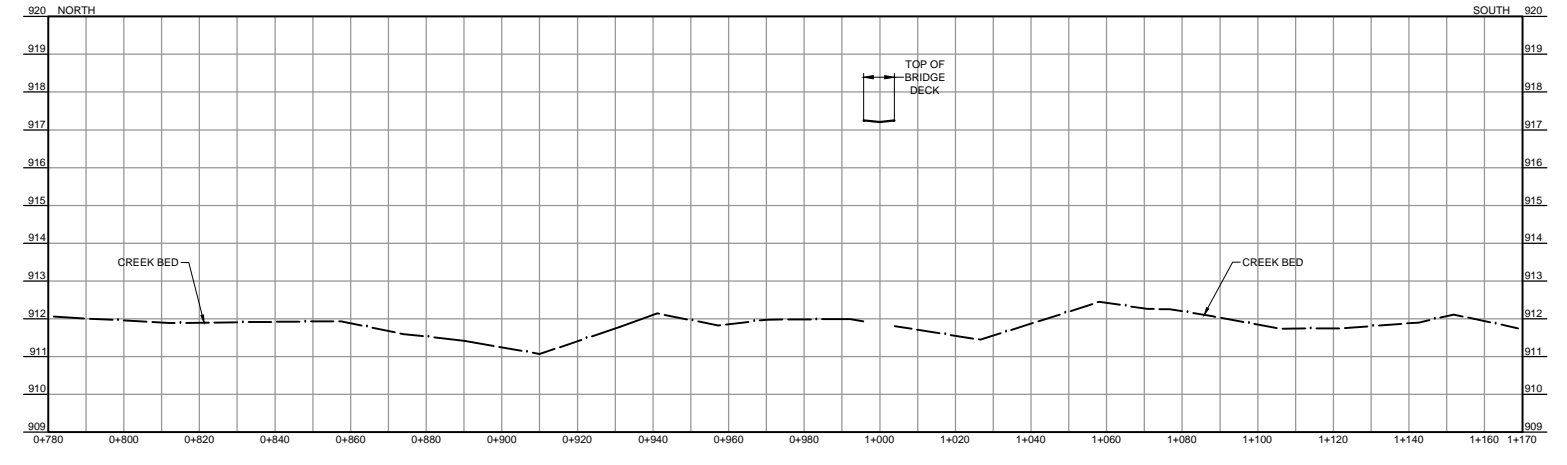
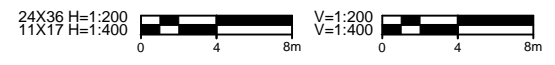
- STATIONING IS ASSUMED AND IS NOTED FOR REFERENCING TO PROFILES AND SECTIONS SHOWN ON THESE PLANS.
- UTM NAD83 GRID COORDINATES ARE BASED ON ASCM 149955.
- TO SCALE TO GROUND, USE A COMBINED SCALE FACTOR OF 0.999884.
- ELEVATIONS ARE GEODETIC BASED ON ASCM 149955
- DISTANCES ARE EXPRESSED AS METERS AND DECIMALS THEREOF.
- THIS IS NOT A LEGAL SURVEY AND SHOULD BE USED FOR INFORMATION PURPOSES ONLY.
- BACKGROUND LEGAL LINWORK SHOULD BE USED AS A VISUAL AID ONLY.



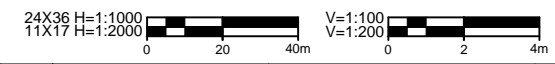
ROAD PROFILE



NATURAL SCALE PROFILE



RIVER BED PROFILE



No.			
REVISIONS			
BY			
DATE			

MOUNTAIN VIEW COUNTY

Roseke Engineering

MIKE SPENCER GEOMETRICS

PRELIMINARY SURVEY
TOWNSHIP ROAD 31-2 OVER CREEK (BRIDGE #1174)
MOUNTAIN VIEW COUNTY ALBERTA - NE12 & SE13 31-27-W4M

SURVEYED	DATE	DRAWN	DATE	STREAM	LOCATION	ROAD	FILE	SHEET
J.B. & K.H.	JULY 24/14	K. DOLL	AUGUST 7/14		12&13-31-27-4	TOWNSHIP RD 31-2		1 OF 2

DATE	BY

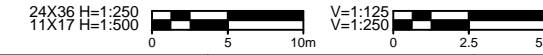
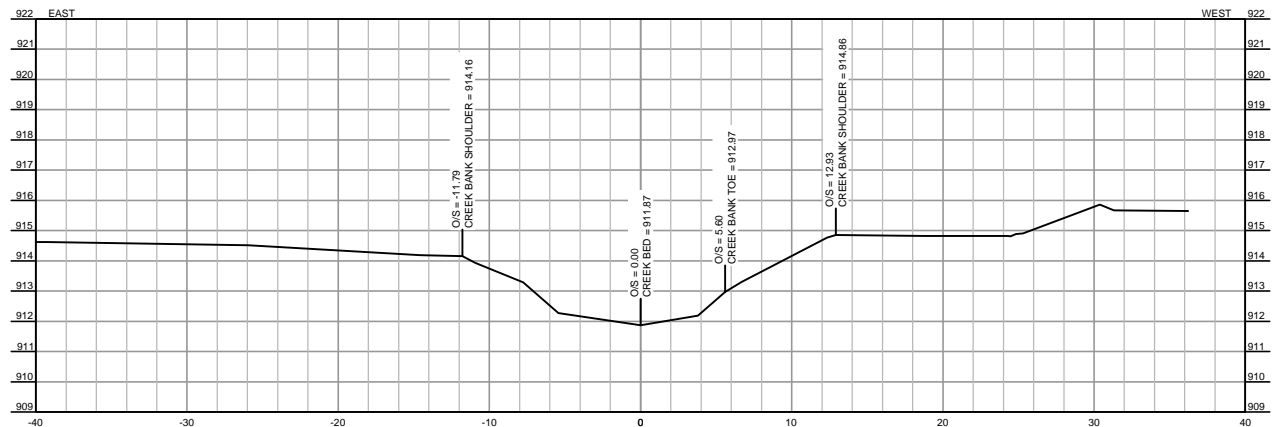
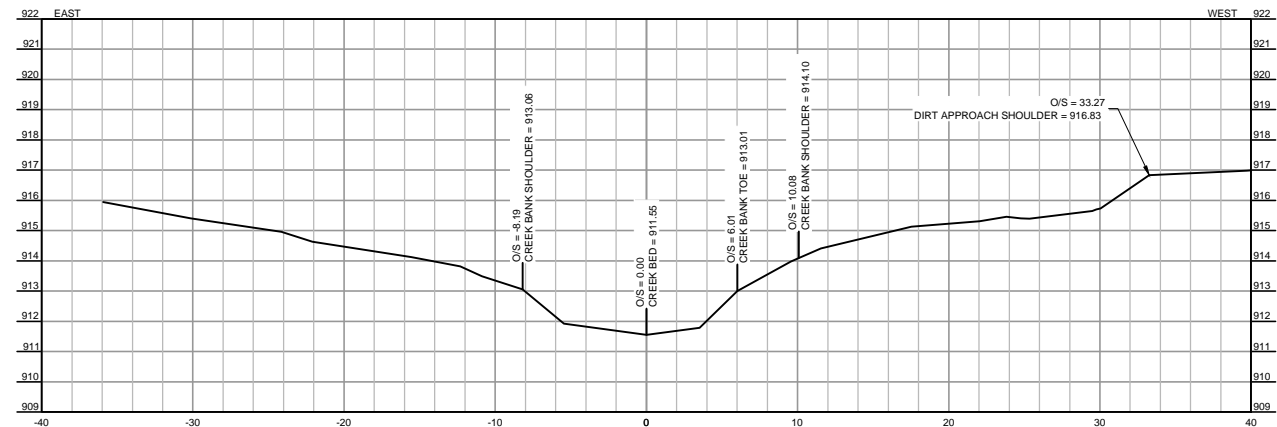
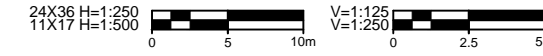
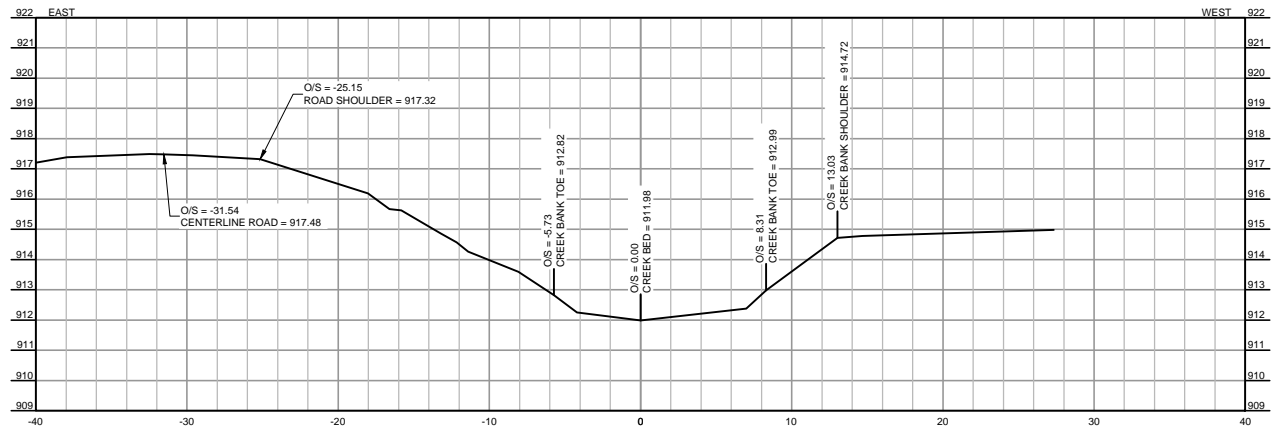
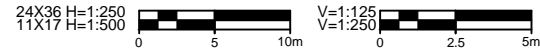
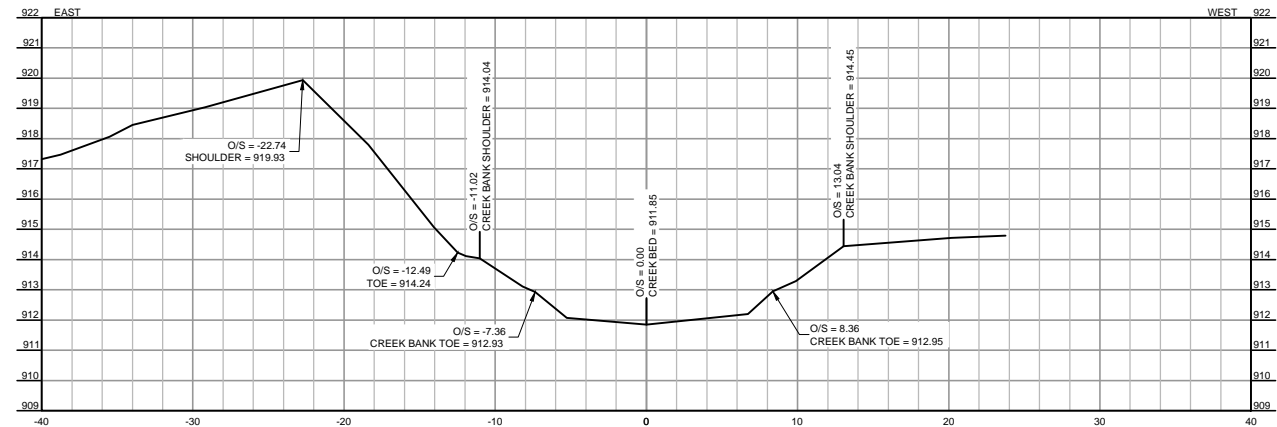
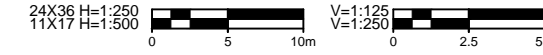
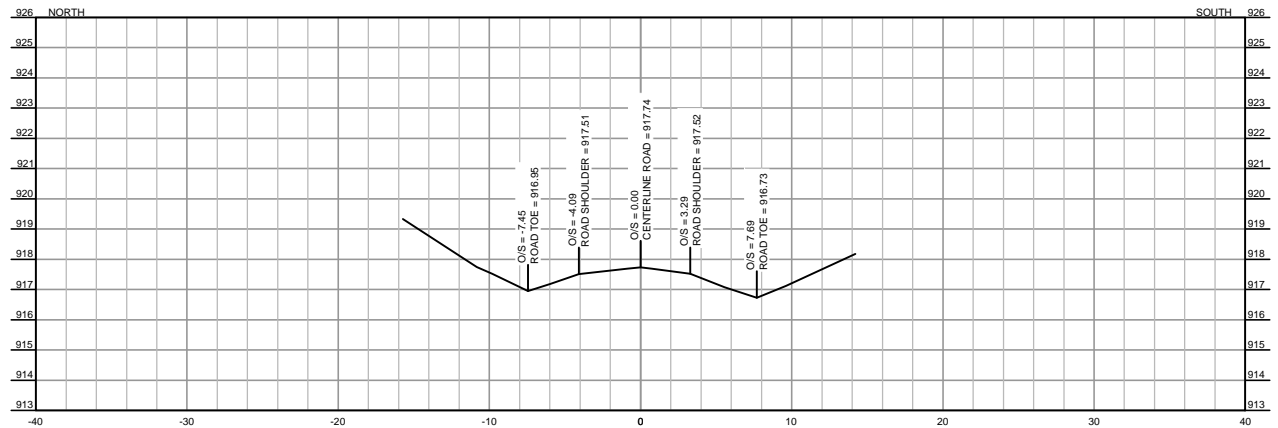
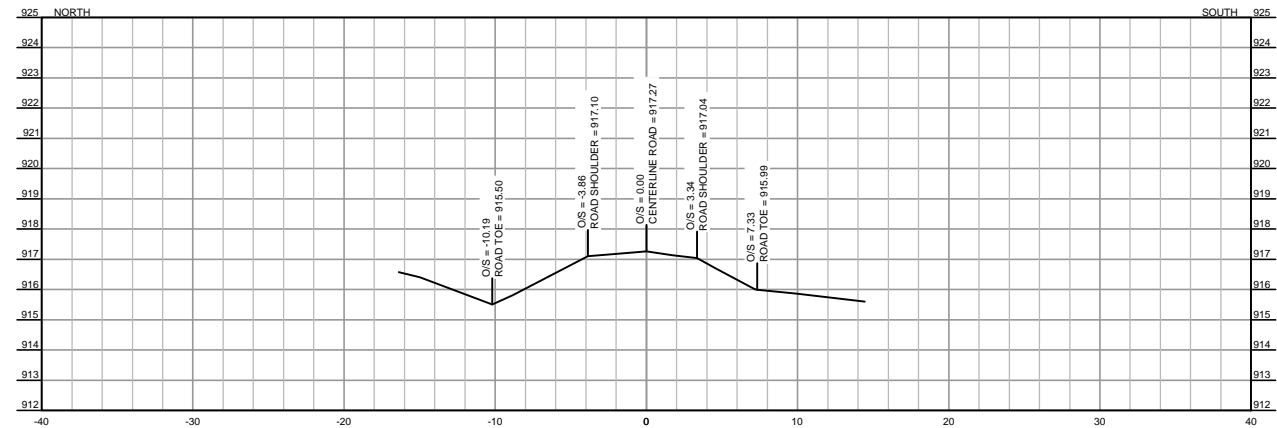
DATE	BY

DATE	BY

DATE	BY

DATE	BY

DATE	BY



No.	REVISIONS	BY	DATE

MOUNTAIN VIEW COUNTY

Roseke Engineering

MIKE SPENCER GEOMETRICS

PRELIMINARY SURVEY
TOWNSHIP ROAD 31-2 OVER CREEK (BRIDGE #1174)
MOUNTAIN VIEW COUNTY ALBERTA - NE12 & SE13 31-27-W4M

DATE	BY	DATE	BY	DATE	BY	DATE	BY	DATE	BY
JULY 24/14	J.B. & K.H.	AUGUST 7/14	K.DOLL						

STREAM	LOCATION	ROAD TOWNSHIP RD	FILE	SHEET
	12&13-31-27-4	31-2		2 OF 2